



Greenpeace The Climate Lawsuit



About the survey

- **Project: The Climate Lawsuit**
- **Background:**
 - Survey about the familiarity among the general population to the climate lawsuit and the perception of Greenpeace.
- **Sample**
 - Target group: The general population 16+
 - Sampled from: Responspanelet
- **Data:**
 - Method: Web
 - Data collected: Week 49
 - Number of interviews: 1007
- **Weight:**
 - The data has been weighted by sex, age and region




Summary

Oppsummert



- A large number of people agree that «*It would be the right decision for a supreme court ruling to limit oil and gas production due to the climate*» In total, **44%** of the population agrees with the statement. The share who agree is larger than the share who disagrees: **32%**
- The statement in which most people agree is that «*Norway should stop exploring for additional oil and gas in the arctic due to the fragility of local nature and wildlife*». **60%** of the population agrees while **20%** of the population disagrees. The remaining have not taken a position or do not know.
- «*Norway should stop exploring for additional oil and gas reserves*» is the only statement where the share who disagrees (**54%**) is larger than the share who agrees (**25%**). The remaining have not taken a position or do not know.
- In general, we see that women, younger people, Oslo/Viken residents, urbanites, the highly educated and those familiar with the lawsuit to the largest extent tend to agree with the statements.
- More than half are familiar with the climate lawsuit: **55%**
Knowledge is higher among men, seniors (65+) urbanites, people who live in Oslo and Viken and among high earners
- Among those familiar with the lawsuit the share who agrees with all the statements is significantly higher. The share who disagrees is similar to those who are not familiar with the lawsuit

A photograph of a group of people in a meeting, overlaid with a blue and green color gradient. In the foreground, a woman with blonde hair is looking towards the camera. In the background, other people are visible, some looking towards the camera and others looking away. The overall mood is professional and collaborative.

Results



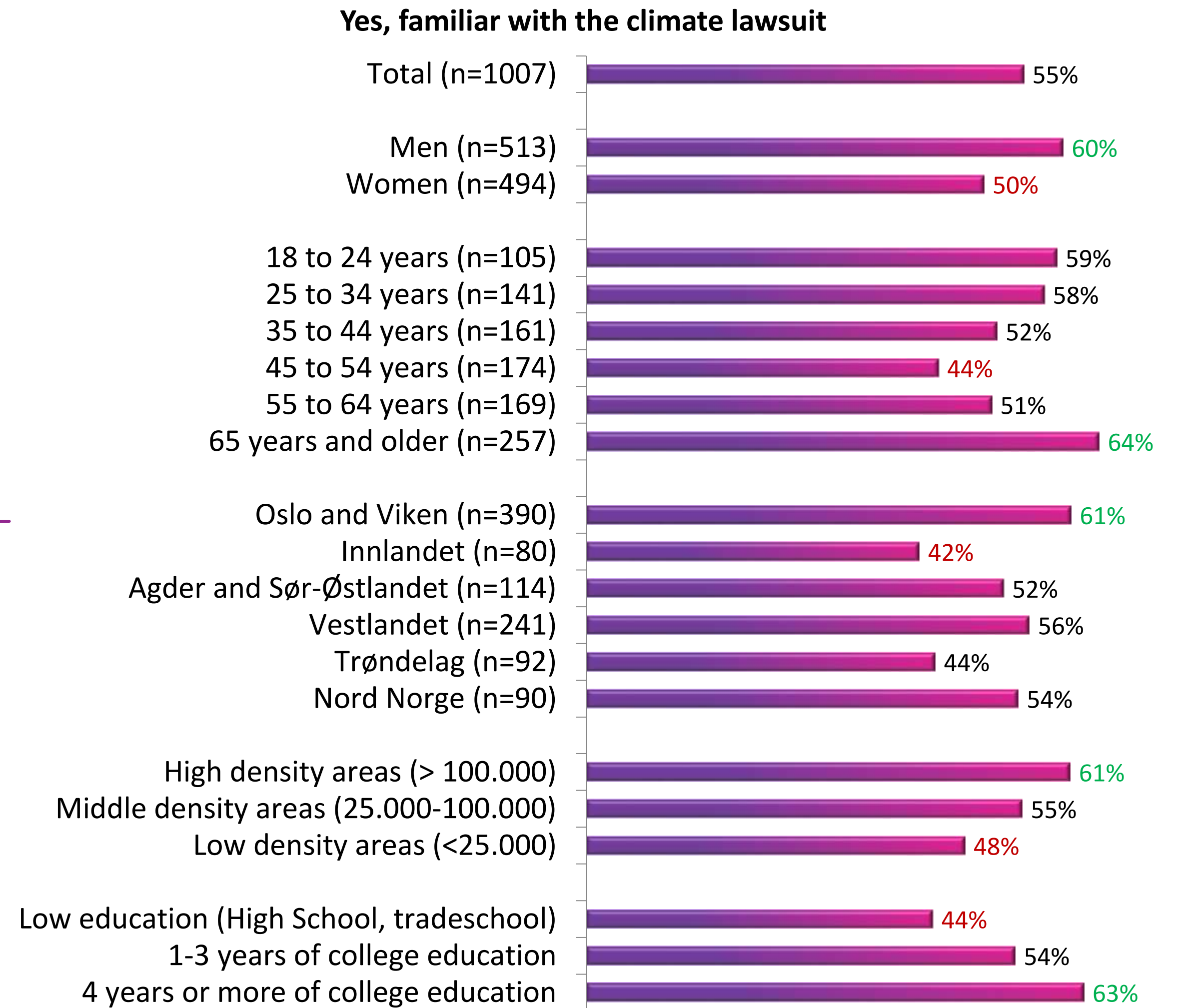
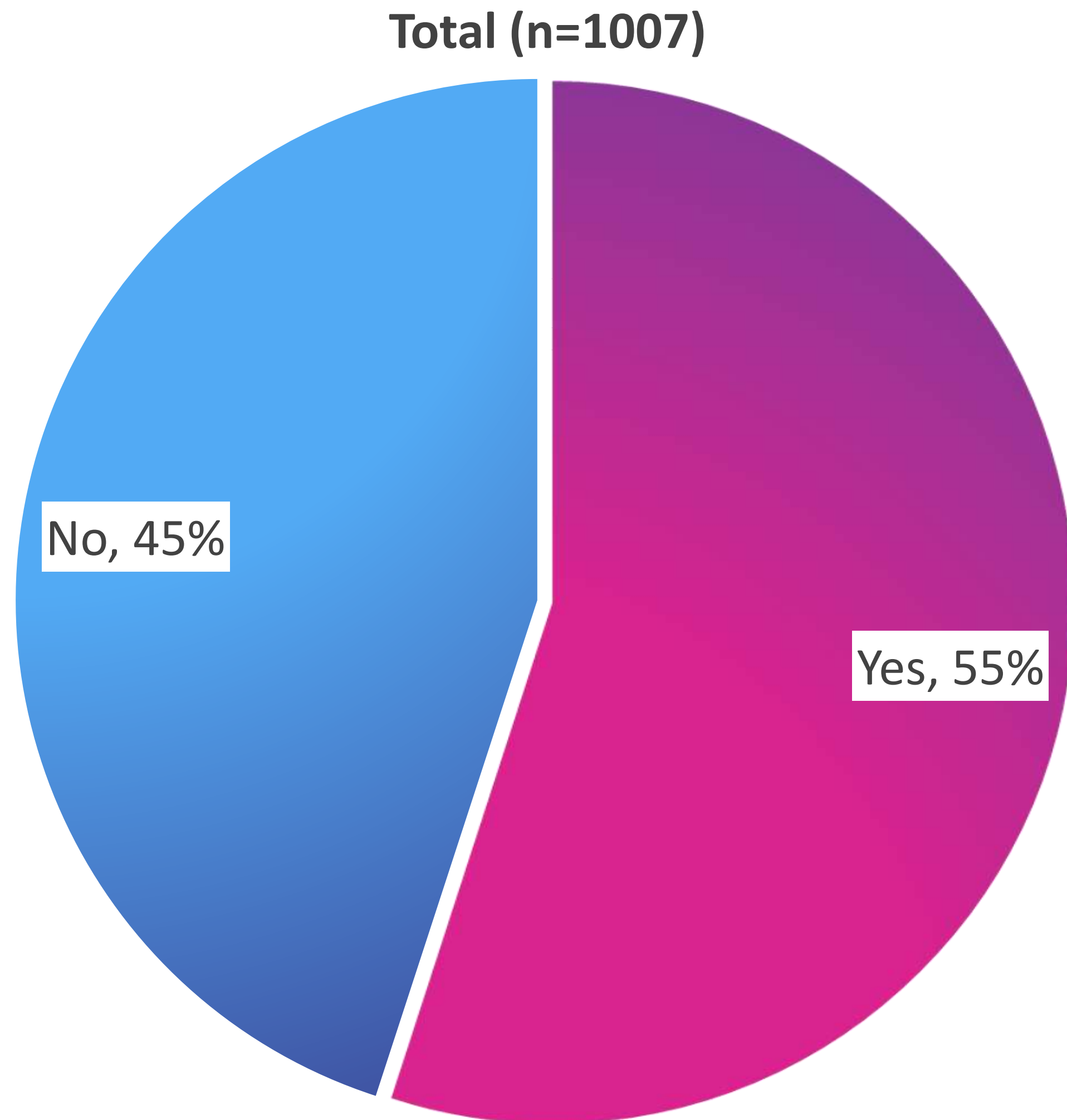
Question 2:

Have you heard about/or are you familiar with the climate lawsuit being filed by Greenpeace and Nature and Youth against the norwegian state?



More than half are familiar with the lawsuit: 55%

Familiarity with the lawsuit is higher among men, seniors (65+), urbanites and people who habitate Oslo and Viken and the highly educated



Spørsmål 2: Have you heard about/or are you familiar with the climate lawsuit being filed by Greenpeace and Nature and Youth against the norwegian state?

Explantation: significantly higher | significantly lower



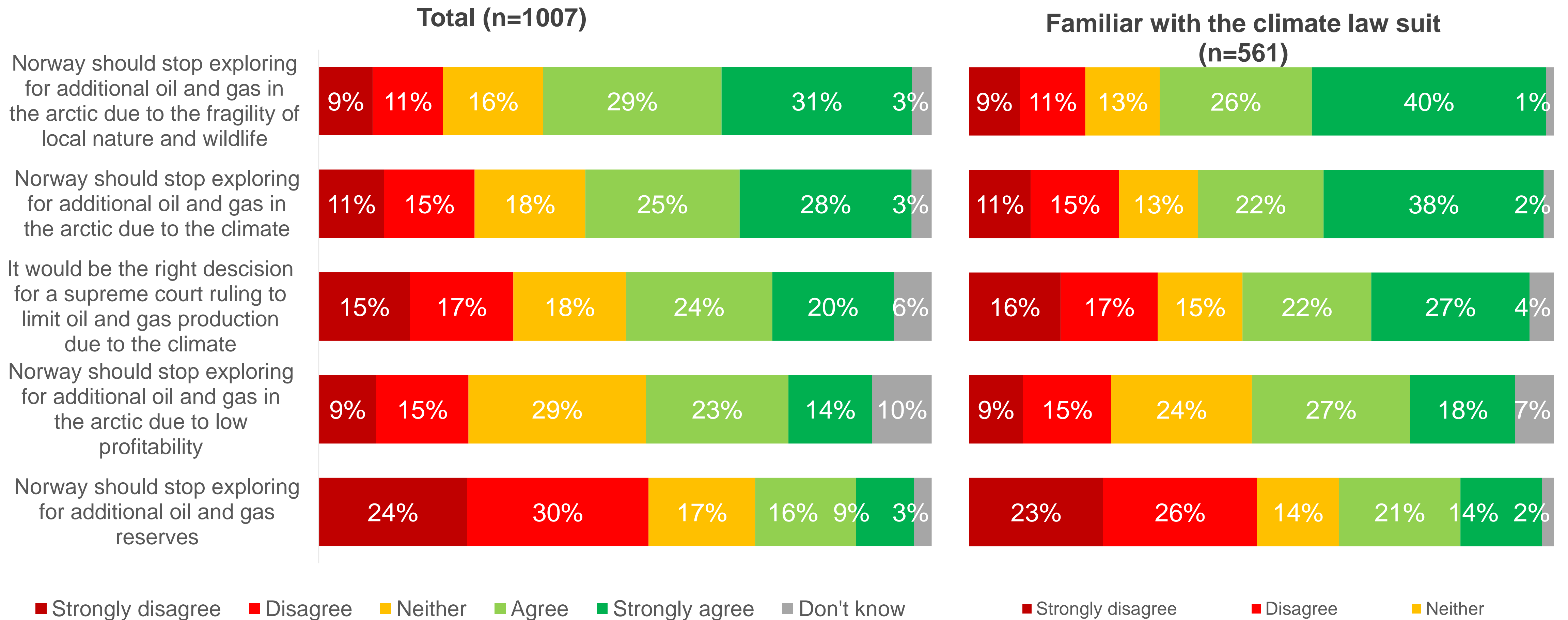
Question 1:

To what degree do you agree with the following statements?

The statement most people agree with «Norway should stop exploring for additional oil and gas in the arctic due to the fragility of local nature and wildlife»



60% agree or strongly agree while 20 % disagree or strongly disagree. Among those who are familiar with the climate lawsuit the share who agree or strongly agree are significantly higher while the share who disagrees are fairly equal between the two groups

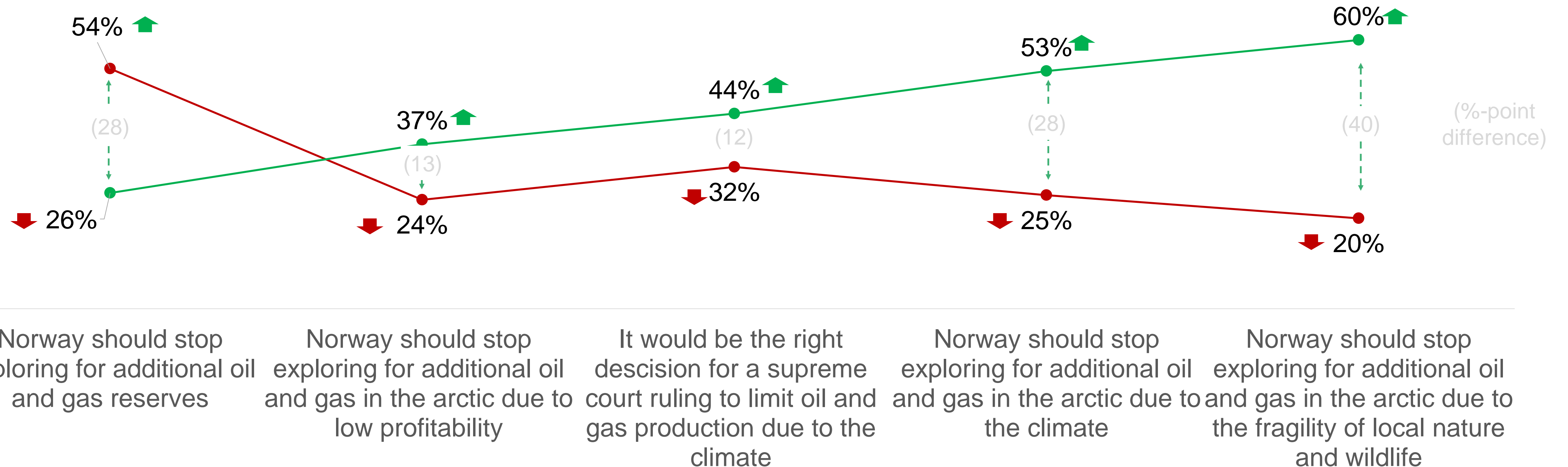




«Norway should stop exploring for additional oil and gas.» is the only statement where the share who disagree (total) is larger than the share who agree (total)

Totalt (n=1007)

● Disagree (merged) ● Agree (merged)

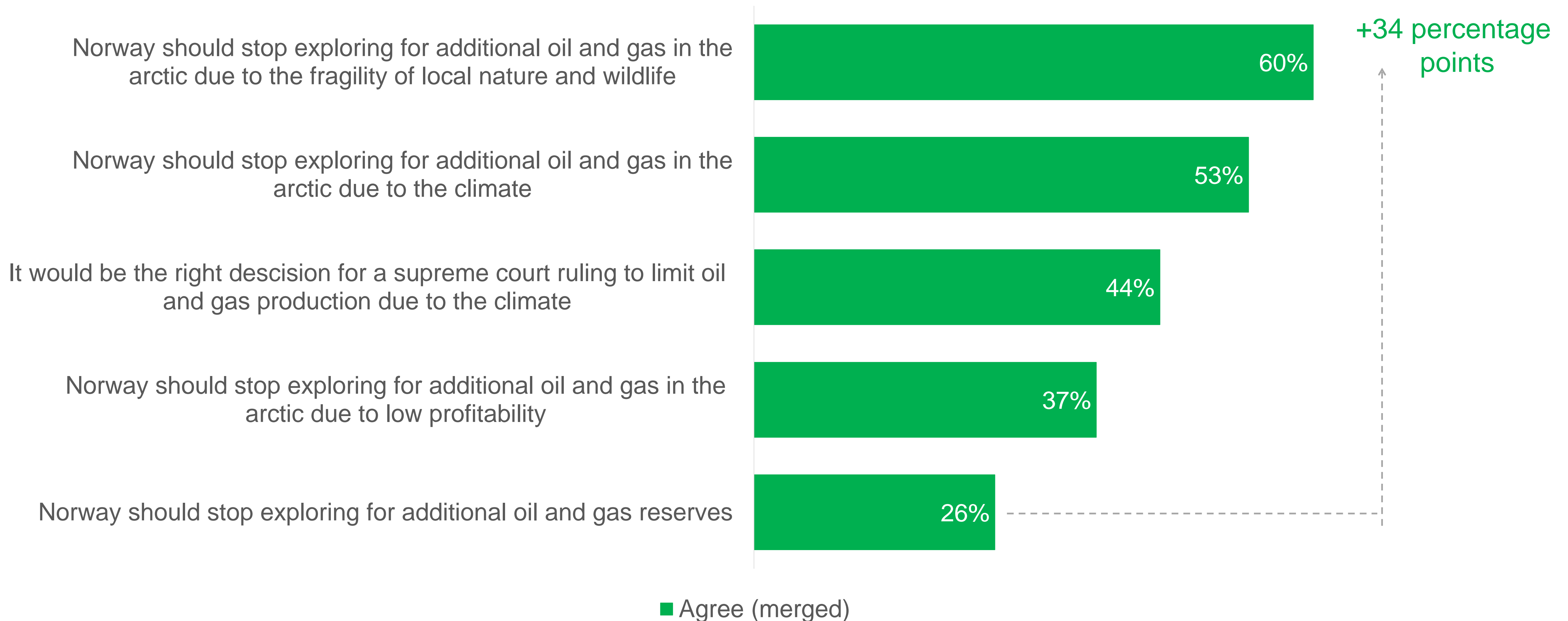




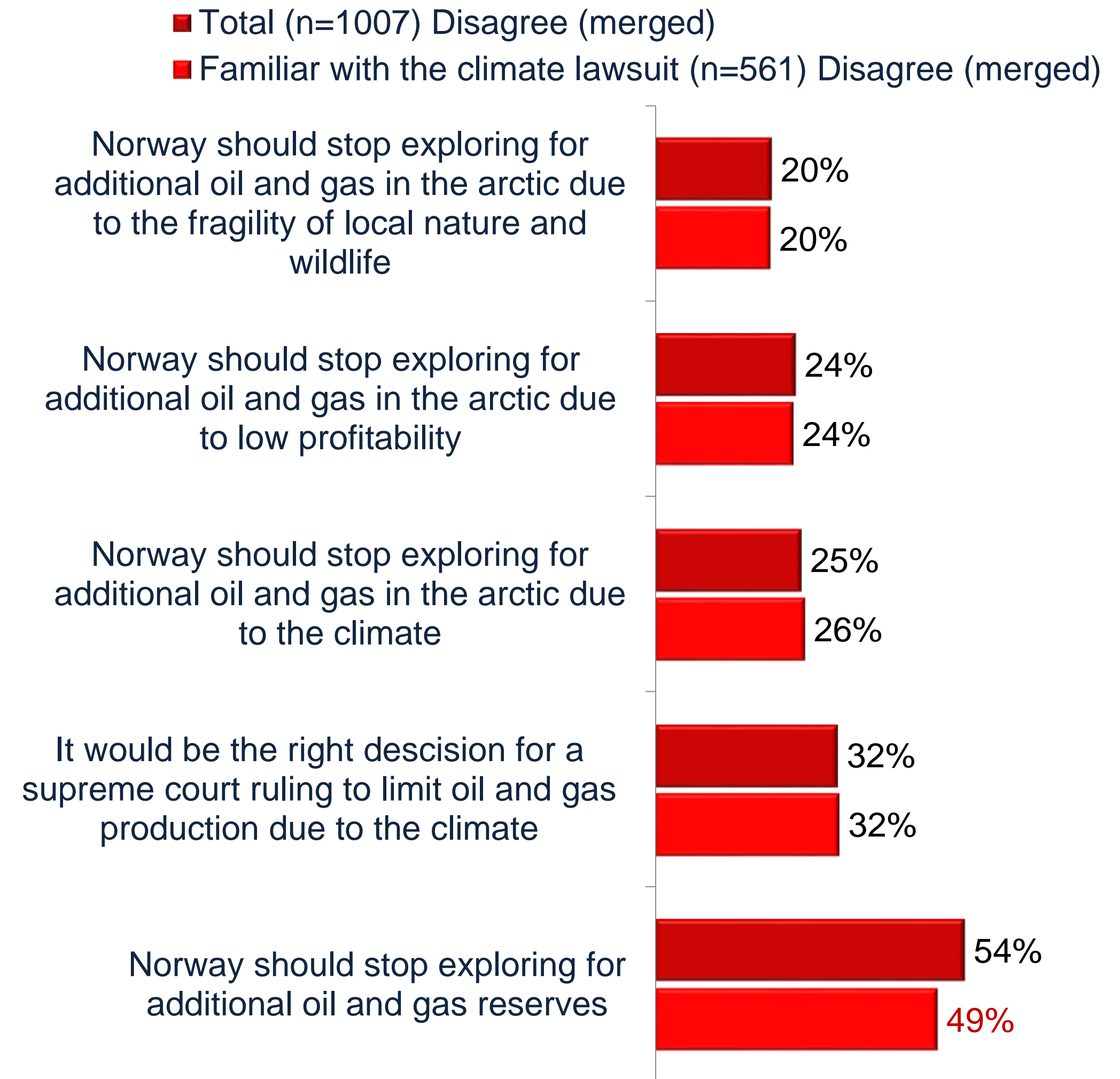
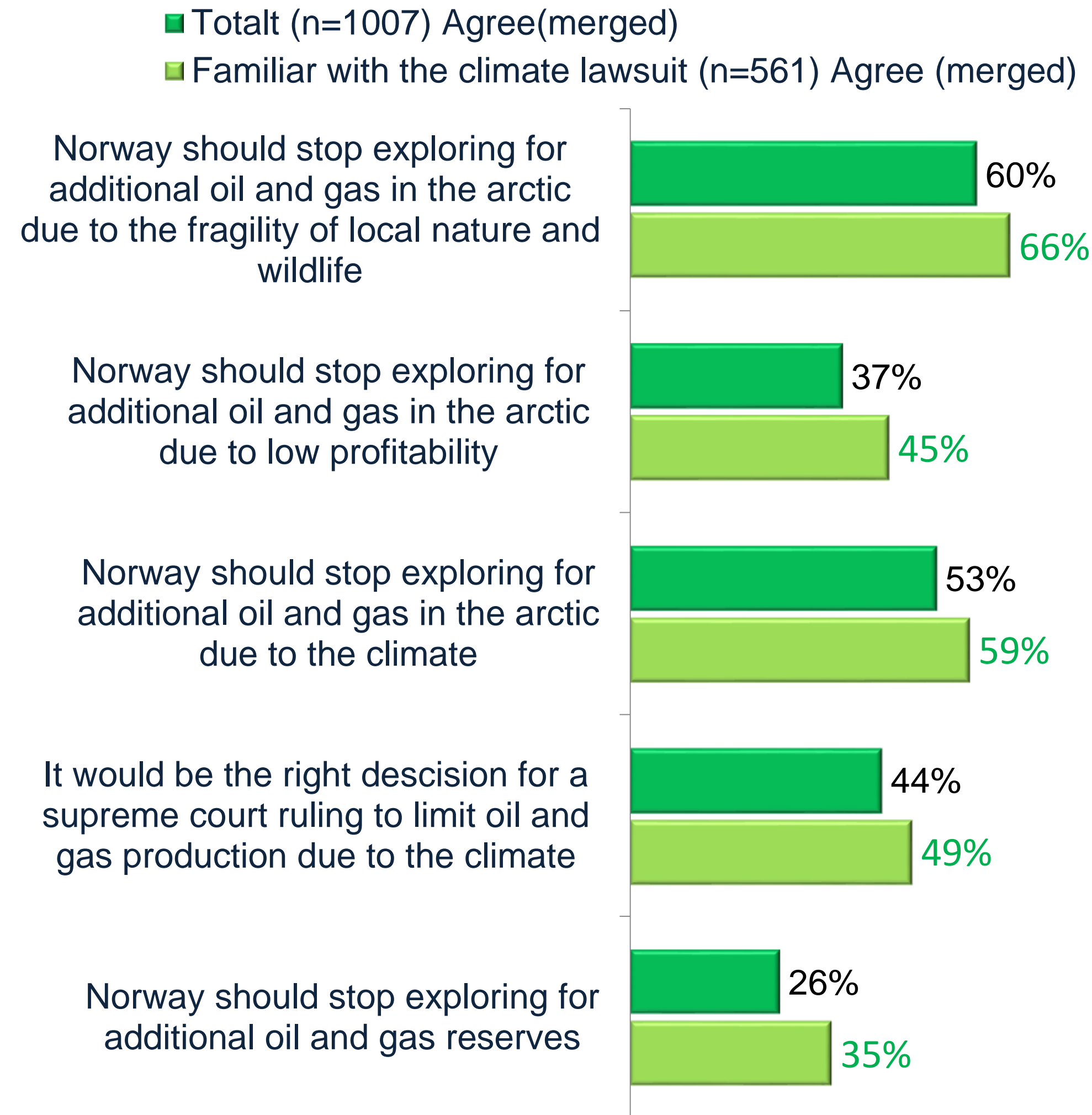
The share that agrees that «Norway should stop exploring for oil and gas...» increase as further information is added to the statement.

In total, 44% agree that a supreme court ruling to limit oil and gas would be the right thing to do and among those familiar with the law suit the share who agree increases to 49%

Total (n=1007)



Among those familiar with the climate lawsuit the share who agree to all of the statements is significantly higher. The share who disagrees are fairly equal between the two groups. With the exception: «Norway should stop exploring for additional oil and gas reserves»





Appendix



Questions

- To what degree do you agree with the following statements?
 - Norway should stop exploring for additional oil and gas reserves
 - Norway should stop exploring for additional oil and gas in the arctic due to low profitability
 - It would be the right decision for a supreme court ruling to limit oil and gas production due to the climate
 - Norway should stop exploring for additional oil and gas in the arctic due to the climate
 - Norway should stop exploring for additional oil and gas in the arctic due to the fragility of local nature and wildlife
- Have you heard about/or are you familiar with the climate lawsuit being filed by Greenpeace and Nature and Youth against the Norwegian state?



Demography

- Demography
 - Sex
 - Age
 - Region
 - Population density
 - Education level
 - Household income
 - Personal income
- Additional variables
 - Familiarity with the climate lawsuit



Margin of error

The margin of error at a 95% confidence interval

	5/95	10/90	15/85	20/80	25/75	30/70	40/60	50/50
20	8.6	12.0	14.2	16.0	17.4	18.3	19.6	20.0
50	6.2	8.5	10.1	11.3	12.2	13.0	13.9	14.1
75	5.0	6.9	8.2	9.2	10.0	10.6	11.3	11.5
100	4.4	6.0	7.1	8.0	8.7	9.2	9.8	10.0
150	3.6	4.9	5.8	6.5	7.1	7.5	8.0	8.2
200	3.1	4.2	5.0	5.7	6.1	6.5	6.9	7.1
250	2.8	3.8	4.5	5.1	5.5	5.8	6.2	6.3
300	2.5	3.5	4.1	4.6	5.0	5.3	5.7	5.8
400	2.2	3.0	3.6	4.0	4.3	4.6	4.9	5.0
500	1.9	2.7	3.2	3.6	3.9	4.1	4.4	4.5
600	1.8	2.5	2.9	3.3	3.5	3.7	4.0	4.1
700	1.6	2.3	2.7	3.0	3.3	3.5	3.7	3.8
800	1.5	2.1	2.5	2.8	3.1	3.2	3.5	3.5
900	1.5	2.0	2.4	2.7	2.9	3.1	3.3	3.3
1000	1.4	1.9	2.3	2.5	2.7	2.9	3.1	3.2
1200	1.2	1.7	2.0	2.3	2.5	2.6	2.8	2.8

Interpretation: For a sample of 200 interviews, and a percentage of 5 %, the margin of error will be at +/- 3.1 %. The upper limit is therefore 8.1 % while the lower limit lies at 1.9 %.



RESPONS 

Thanks!

Camilla Løkting

+47 934 12 354// cl@responsanalyse.no